

# Matchprint

## ProofPro RIP v1.0 and Media System



**Kodak Polychrome**  
GRAPHICS

# Yes You Can.

Want to please all of the people all of the time?

With Kodak Polychrome Graphics (KPG) Matchprint ProofPro RIP and Media System you can.

Output a high quality, economical contract proof on your own inkjet printer, in minutes.

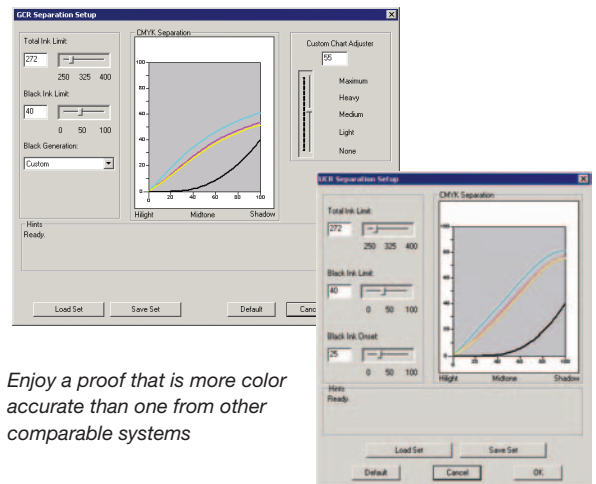
Matchprint ProofPro RIP, combined with Matchprint ProofPro Inkjet Media and your favorite HP, Epson, Canon or Matchprint inkjet printer, gives you a proof that is accurate, achievable on press and costs just a few dollars to produce. And you have the confidence that your final print job will match the color on your inkjet proof.

Matchprint ProofPro RIP v1.0 is ICC-compatible and works with a wide range of workflows and file formats. So you are sure to please all of your customers.



## More accurate proofs than ever

- KPG's Color Fidelity Module (CFM) ensures more accurate colors and truer blacks than any other RIP in its class
- Innovative gamut mapping technology processes all colors – including the critical black channel – with smoother transformations and higher precision
- Proprietary Matchprint Media and reference profiles provide the most accurate, consistent proofing from inkjet printers



*Enjoy a proof that is more color accurate than one from other comparable systems*



## Seamless integration with most any workflow and file format

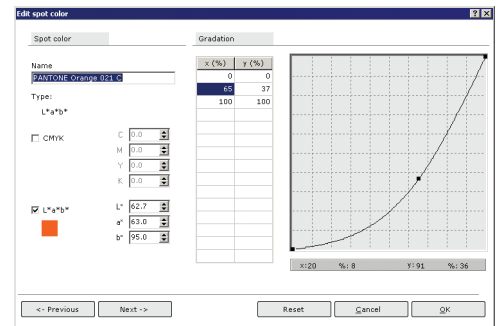
- Matchprint ProofPro RIP is based on Adobe CPSI technology, the most popular industry standard. Get maximum compatibility and ease of use and ensure your proofing solution keeps pace with industry standards
- Matchprint ProofPro RIP v1.0 supports the most popular file formats including composite and separated PostScript files: EPS, PDF, TIFF, TIFF-IT, JPEG, BMP, Scitex CT/LW, and outputs direct from Heidelberg Delta lists
- Matchprint ProofPro RIP features Adobe CPSI for overprinting, in-RIP separation, support of 2-byte fonts and full PDF/X1, PDF/X1a, PDF/X3 support



## Matchprint Colorlink

Gain more control over your spot colors than ever before.

- Visit Matchprint Colorlink for your library of spot colors and to create customized spot colors
- Supports HKS 3000, PANTONE® and TOYO spot colors. and up to twelve spot colors on one job



Adjust color transparency and gradation curves



## Matchprint ProofPro RIP is easier to use than ever

- Matchprint Calibrator is a new, easy-to-use tool that makes it simple to relinearize your printer prior to proofing with a few steps
- Matchprint ProofPro RIP allows you to create multiple proofing set-ups for quick and easy everyday work
- Matchprint ProofPro RIP is ready-to-print with a wide variety of Matchprint ProofPro Inkjet Media

## Unmatched productivity and flexibility

- Offers a wide array of reference profile options as well as profiles for Matchprint and Kodak inkjet media
- Receive and create JDF files for remote proofing
- ROOM Workflow with Optional One-Bit TIFF Interface
- Pair with Matchprint ProofPro Media in SuperWhite, Commercial and Publication tints
- Available for all popular inkjet proofers



Compatible with a wide range of Epson, HP, Canon or Matchprint printers

## Broad printer compatibility

The Matchprint ProofPro RIP can drive a wide variety of inkjet printers from KPG, Epson, Canon and HP.

Matchprint ProofPro RIP v1.0

		Compatible Media
WF/A3	HP DesignJet 10/20/50PS	Matchprint ProofPro Media/Dye
	Canon BJC 8500	Matchprint ProofPro Media/Dye
	Canon W2200	Matchprint ProofPro Media/Dye
	Epson 4000	Matchprint ProofPro Media/Pigment
	Epson 5000	Matchprint ProofPro Media/Dye
LF-A1/A2	Epson 7000	Matchprint ProofPro Media/Dye
	Epson 7600	Matchprint ProofPro Media/Pigment
	Canon 6200	Matchprint ProofPro Media/Pigment
	HP 130 N/NR	Matchprint ProofPro Media/Dye
	ProofPro 2610	Matchprint ProofPro Media/Dye
	Canon 7250	Matchprint ProofPro Media/Dye
	Canon 8200	Matchprint ProofPro Media/Pigment
LF-A0/A1	Canon W7200	Matchprint ProofPro Media/Dye
	Epson 9000	Matchprint ProofPro Media/Dye
	Epson 9600	Matchprint ProofPro Media/Pigment
	Epson 10000	Matchprint ProofPro Media/Dye
	Epson 10600	Matchprint ProofPro Media/Pigment
	HP 2000/2500CP	Matchprint ProofPro Media/Dye
	HP DesignJet 5000	Matchprint ProofPro Media/Dye
	HP DesignJet 5500/UV	Matchprint ProofPro Media/Pigment
	HP DesignJet 5500	Matchprint ProofPro Media/Dye
	Matchprint 5542	Matchprint ProofPro Media/Dye
	Matchprint 5560	Matchprint ProofPro Media/Dye
	Matchprint 5042	Matchprint ProofPro Media/Dye
	Matchprint 5060	Matchprint ProofPro Media/Dye

## Matchprint ProofPro services

Get the most from your Matchprint ProofPro solution with KPG installation, training, support and proofing. Inkjet experts can help you train your staff, manage your maintenance and improve your results.

## Matchprint ProofPro Media

Matchprint ProofPro Media is a full line of high quality proofing papers created for ultimate quality and productivity for inkjet proofing. Pair with Matchprint ProofPro RIP v1.0 and your favorite printer for final proofs at a price you will like.

Available for dye and pigment printers in SuperWhite, Commercial and Publication.

### A Bonus – Use your RIP to proof your screened files – with Matchprint OBTi

Matchprint OBTi can be added to your inkjet proofing workflow. Proof color managed One Bit TIFF jobs on your large format inkjet proofer. The ROOM (Rip Once Output Many) workflow concept gives you the ability to generate proofs from the same file that is used to generate plates. Proof your final production files to check traps, overprints, imposition, and even PANTONE® and spots colors on a single, high quality color proof.

Enjoy peace of mind knowing you have data and color integrity.

To order, contact your KPG representative, your dealer or visit [www.kpggraphics.com](http://www.kpggraphics.com) for complete information.



**Kodak Polychrome**  
G R A P H I C S

[www.kpggraphics.com](http://www.kpggraphics.com)

Kodak Polychrome Graphics  
401 Merritt 7  
Norwalk, CT 06851  
1.800.293.4284

© 2004 Kodak Polychrome Graphics. All rights reserved.

Matchprint and ProofPro are trademarks of Kodak Polychrome Graphics. Kodak is a trademark of Eastman Kodak Company. PANTONE and other Pantone, Inc. trademarks are the property of Pantone, Inc. All trademarks and registered trademarks used herein are the property of their respective owners.

Prepared and printed by Kodak Polychrome Graphics products.